





















Byyle

Worklist: 1906

<u>LAB_CASE</u>	<u>ITEM</u>	<u>TASK_ID</u>	<u>DESCRIPTION</u>	
C2017-1269	5	95751	AM 3 Urine Carboxy-THC	
C2017-1277	6	95752	AM 3 Urine Carboxy-THC	
C2017-1382	3	95753	AM 3 Urine Carboxy-THC	
M2017-3106	2	95754	AM 3 Urine Carboxy-THC	
M2017-3157	5	95755	AM 3 Urine Carboxy-THC	
P2017-1410	1	95756	AM 3 Urine Carboxy-THC	
P2017-1515	1	95757	AM 3 Urine Carboxy-THC	
P2017-1519	1	95758	AM 3 Urine Carboxy-THC	
P2017-1523	1	95759	AM 3 Urine Carboxy-THC	
P2017-1529	1	95760	AM 3 Urine Carboxy-THC	
P2017-1571	1	95761	AM 3 Urine Carboxy-THC	
P2017-1577	1	95762	AM 3 Urine Carboxy-THC	
P2017-1581	1	95763	AM 3 Urine Carboxy-THC	
P2017-1592	1	95764	AM 3 Urine Carboxy-THC	
P2017-1611	1	95765	AM 3 Urine Carboxy-THC	
P2017-1613	1	95766	AM 3 Urine Carboxy-THC	
P2017-1625	1	95767	AM 3 Urine Carboxy-THC	
P2017-1682	1	95768	AM 3 Urine Carboxy-THC	
P2017-1683	1	95769	AM 3 Urine Carboxy-THC	
P2017-1723	1	95770	AM 3 Urine Carboxy-THC	

Data Path : C:\My Files\cshrum\Desktop\Consolidated\Data\URINE\092617 Urine CANN\
Data File : THC-NC.D
Acq On : 26 Sep 2017 15:31
Operator : District 5 Forensic Services
Sample : Negative Control
Misc : Lot # POC112116; AM #3 Worklist 1906
ALS Vial : 1 Sample Multiplier: 1

Integration Parameters: events.e
Integrator: ChemStation

Method : C:\gcms\1\methods\TOX.M
Title :

Signal : EIC Ion 371.00 (370.70 to 371.70): THC-NC.D\data.ms

peak #	R.T. min	first scan	max scan	last scan	PK TY	peak height	corr. area	corr. % max.	% of total
1	5.240	45	54	60	VV	232	3359	16.04%	2.857%
2	5.638	178	192	204	PV	1352	20936	100.00%	17.806%
3	5.693	204	212	230	VV	322	5702	27.24%	4.850%
4	6.261	396	409	415	PV	83	1372	6.55%	1.167%
5	6.484	456	486	511	BV	389	17272	82.50%	14.690%
6	6.607	511	529	549	VV	250	10517	50.23%	8.945%
7	6.748	556	578	591	PV	289	8373	39.99%	7.121%
8	6.875	597	622	630	BV	284	8349	39.88%	7.101%
9	6.938	630	644	670	VV	627	18188	86.88%	15.469%
10	7.143	694	715	729	VV	551	15793	75.44%	13.432%
11	7.210	729	739	752	VV	165	3961	18.92%	3.369%
12	7.276	752	761	766	VV 2	212	2975	14.21%	2.530%
13	7.294	766	768	774	VV	125	779	3.72%	0.663%

Sum of corrected areas: 117575
Signal : EIC Ion 473.00 (472.70 to 473.70): THC-NC.D\data.ms

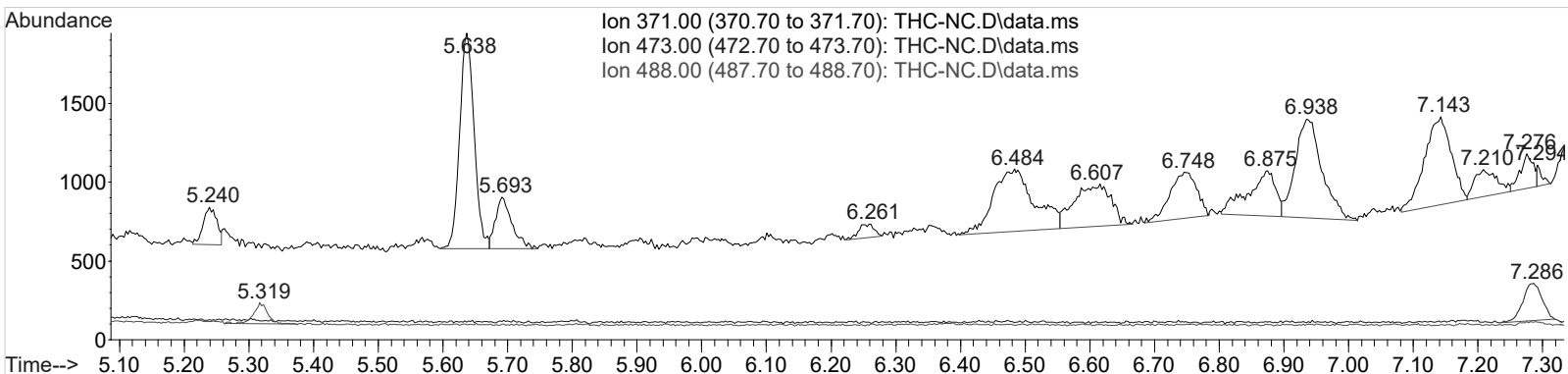
peak #	R.T. min	first scan	max scan	last scan	PK TY	peak height	corr. area	corr. % max.	% of total
1	7.286	747	765	776	PBA2	234	4867	100.00%	100.000%

Sum of corrected areas: 4867
Signal : EIC Ion 488.00 (487.70 to 488.70): THC-NC.D\data.ms

peak #	R.T. min	first scan	max scan	last scan	PK TY	peak height	corr. area	corr. % max.	% of total
1	5.319	63	82	101	BV	127	2058	100.00%	100.000%

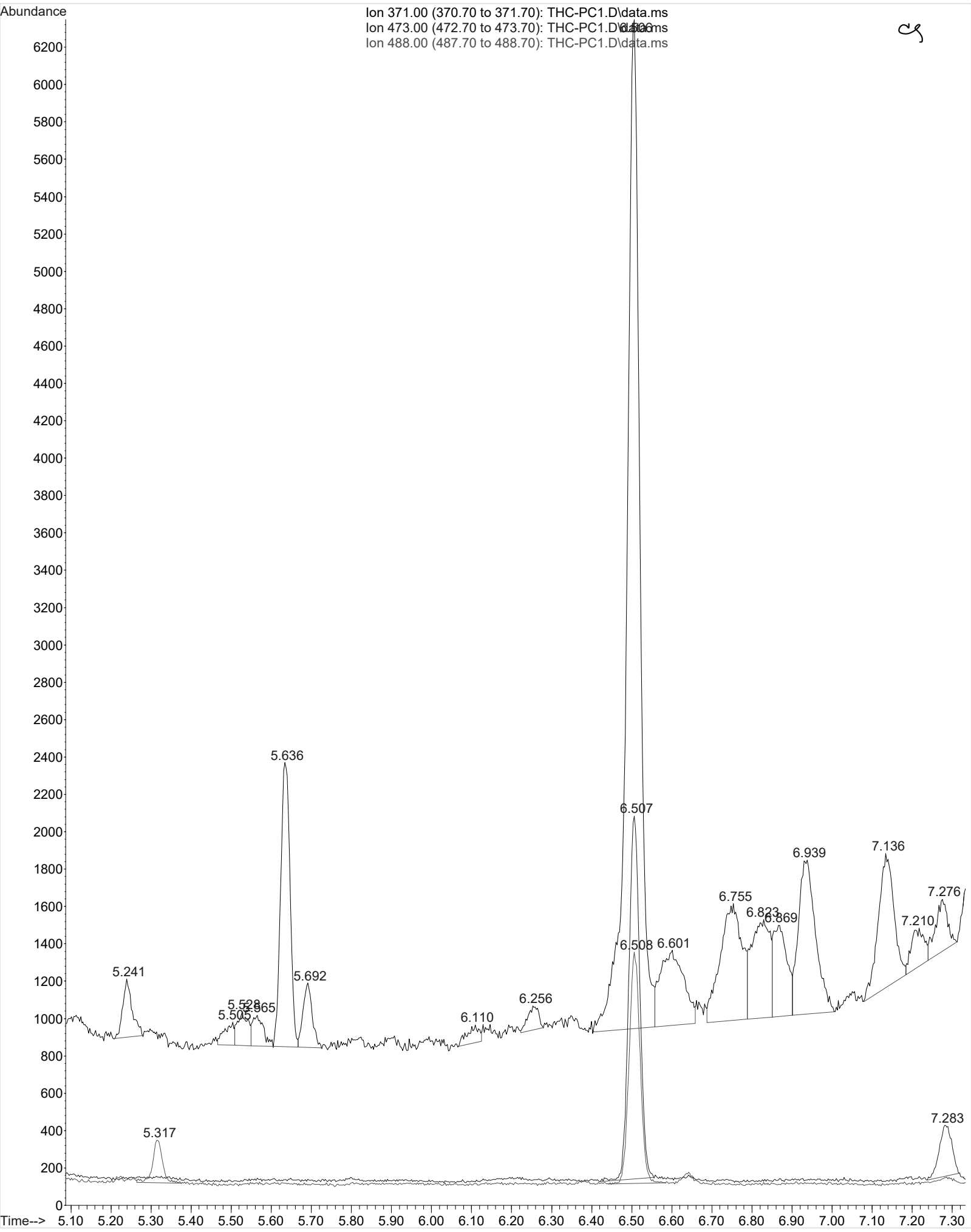
Sum of corrected areas: 2058

TOX.M Thu Sep 28 09:19:10 2017



cg

Ion 371.00 (370.70 to 371.70): THC-PC1.D\data.ms
Ion 473.00 (472.70 to 473.70): THC-PC1.D\data.ms
Ion 488.00 (487.70 to 488.70): THC-PC1.D\data.ms



Data Path : C:\My Files\cshrum\Desktop\Consolidated\Data\URINE\092617 Urine CANN\
Data File : THC-PC1.D
Acq On : 26 Sep 2017 15:42
Operator : District 5 Forensic Services
Sample : Spiked Positive c-THC Control
Misc : c-THC lot # 0497429 in Negative Lot # POC112116; Worklist 1906
ALS Vial : 2 Sample Multiplier: 1

Integration Parameters: events.e
Integrator: ChemStation

Method : C:\gcms\1\methods\TOX.M
Title :

Signal : EIC Ion 371.00 (370.70 to 371.70): THC-PC1.D\data.ms

peak #	R.T. min	first scan	max scan	last scan	PK TY	peak height	corr. area	corr. % max.	% of total
1	5.241	43	54	68	PV	305	5018	4.16%	1.721%
2	5.505	133	146	148	VV 2	115	1975	1.64%	0.677%
3	5.528	148	154	162	VV	175	3237	2.68%	1.110%
4	5.565	162	167	181	VV	158	3172	2.63%	1.088%
5	5.636	181	192	202	VV	1512	24690	20.47%	8.468%
6	5.692	202	211	223	VV	339	5467	4.53%	1.875%
7	6.110	342	356	362	PV	88	1858	1.54%	0.637%
8	6.256	396	407	415	VV 2	124	2332	1.93%	0.800%
9	6.506	459	494	512	PV	5386	120644	100.00%	41.377%
10	6.601	512	527	547	VV 2	396	16448	13.63%	5.641%
11	6.755	557	580	592	VV	614	23422	19.41%	8.033%
12	6.823	592	604	614	VV	510	16964	14.06%	5.818%
13	6.869	614	620	631	VV	487	11607	9.62%	3.981%
14	6.939	631	644	668	VV	820	25054	20.77%	8.593%
15	7.136	693	713	729	PV	696	19172	15.89%	6.575%
16	7.210	729	738	749	VV	203	4570	3.79%	1.567%
17	7.276	749	761	774	VV 2	274	5942	4.93%	2.038%

Sum of corrected areas: 291573

Signal : EIC Ion 473.00 (472.70 to 473.70): THC-PC1.D\data.ms

peak #	R.T. min	first scan	max scan	last scan	PK TY	peak height	corr. area	corr. % max.	% of total
1	6.507	464	494	511	PV	1935	36831	100.00%	85.979%
2	7.283	748	764	776	PBA2	271	6006	16.31%	14.021%

Sum of corrected areas: 42837

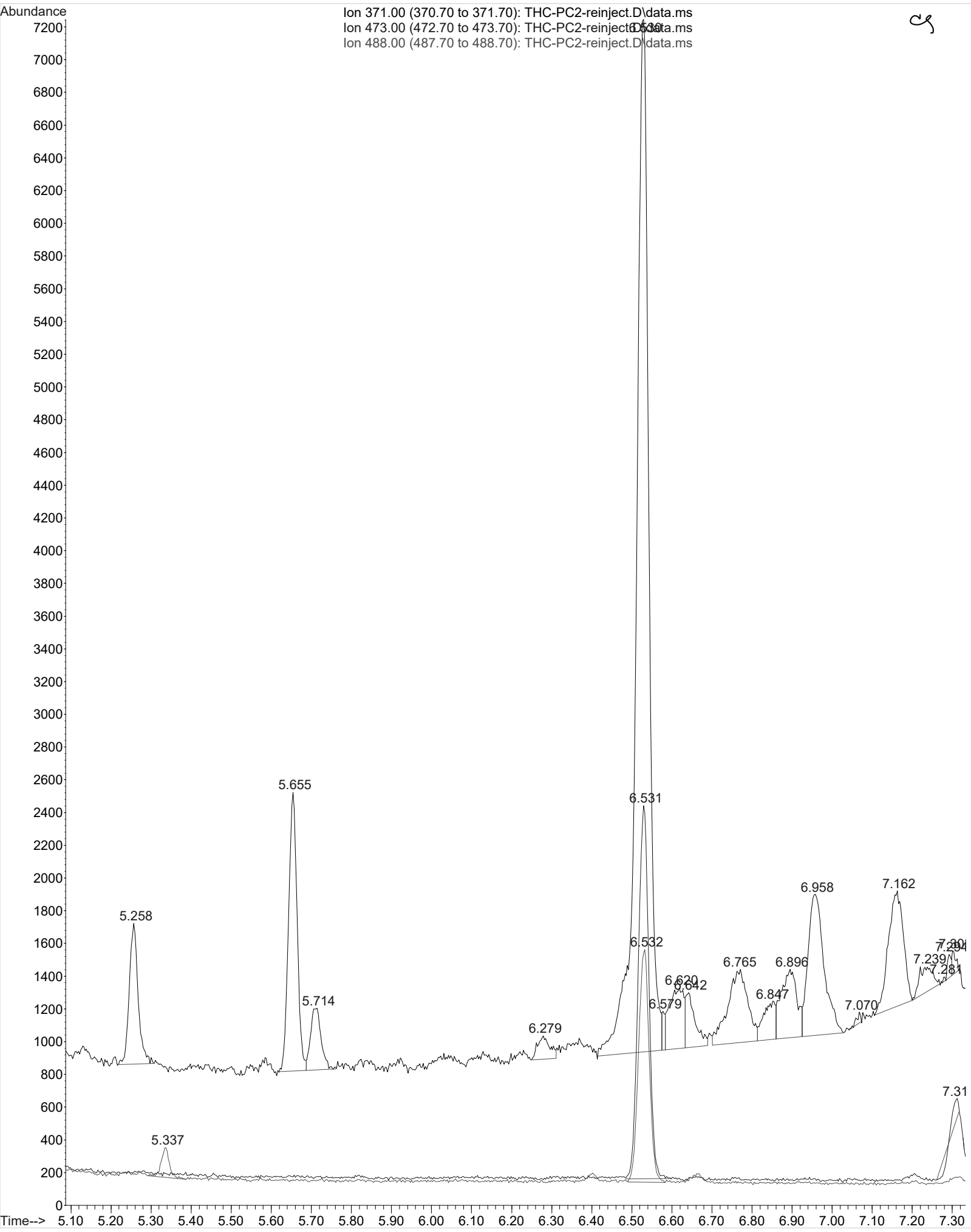
Signal : EIC Ion 488.00 (487.70 to 488.70): THC-PC1.D\data.ms

peak #	R.T. min	first scan	max scan	last scan	PK TY	peak height	corr. area	corr. % max.	% of total
1	5.317	63	81	102	VV 2	228	3995	17.00%	14.533%
2	6.508	471	494	521	BV	1228	23492	100.00%	85.467%

Sum of corrected areas: 27486

CS

Ion 371.00 (370.70 to 371.70): THC-PC2-reinject.D\data.ms
Ion 473.00 (472.70 to 473.70): THC-PC2-reinject.D\data.ms
Ion 488.00 (487.70 to 488.70): THC-PC2-reinject.D\data.ms



Data Path : C:\My Files\cshrum\Desktop\Consolidated\Data\URINE\092617 Urine CANN\
Data File : THC-PC2-reinject.D
Acq On : 27 Sep 2017 8:44
Operator : District 5 Forensic Services
Sample : Spiked Positive c-THC Control
Misc : c-THC lot # 0497429 in Negative Lot # POC112116; Worklist 1906
ALS Vial : 2 Sample Multiplier: 1

Integration Parameters: events.e
Integrator: ChemStation

Method : C:\gcms\1\methods\TOX.M
Title :

Signal : EIC Ion 371.00 (370.70 to 371.70): THC-PC2-reinject.D\data.ms

peak #	R.T. min	first scan	max scan	last scan	PK TY	peak height	corr. area	corr. % max.	% of total
1	5.258	47	60	78	PV	846	13086	9.59%	4.662%
2	5.655	186	198	210	BV	1688	25316	18.55%	9.018%
3	5.714	210	219	236	VV	377	6916	5.07%	2.464%
4	6.279	405	415	426	PV	140	2932	2.15%	1.045%
5	6.530	462	502	518	PV 2	6313	136469	100.00%	48.614%
6	6.579	518	519	521	VV 2	234	1128	0.83%	0.402%
7	6.620	521	533	538	VV 2	363	9221	6.76%	3.285%
8	6.642	538	541	558	VV 3	332	5716	4.19%	2.036%
9	6.765	562	584	601	VV	436	15527	11.38%	5.531%
10	6.847	601	612	617	VV	214	4751	3.48%	1.692%
11	6.896	617	629	639	VV	414	11454	8.39%	4.080%
12	6.958	639	651	676	VV	861	24087	17.65%	8.581%
13	7.070	680	690	691	PV	59	391	0.29%	0.139%
14	7.162	703	722	736	PV	694	18184	13.32%	6.478%
15	7.239	736	749	761	PV	143	3499	2.56%	1.247%
16	7.281	761	763	764	PV 2	25	76	0.06%	0.027%
17	7.294	764	768	769	PV 2	133	791	0.58%	0.282%
18	7.303	769	771	776	VBA2	141	1171	0.86%	0.417%

Sum of corrected areas: 280716

Signal : EIC Ion 473.00 (472.70 to 473.70): THC-PC2-reinject.D\data.ms

peak #	R.T. min	first scan	max scan	last scan	PK TY	peak height	corr. area	corr. % max.	% of total
1	6.531	487	503	526	VV 2	2269	41806	100.00%	98.007%
2	7.313	756	774	776	BBA2	110	850	2.03%	1.993%

Sum of corrected areas: 42657

Signal : EIC Ion 488.00 (487.70 to 488.70): THC-PC2-reinject.D\data.ms

peak #	R.T. min	first scan	max scan	last scan	PK TY	peak height	corr. area	corr. % max.	% of total
1	5.337	73	88	105	PV 2	183	2559	9.78%	8.912%
2	6.532	488	503	521	VV 2	1410	26157	100.00%	91.088%

Sum of corrected areas: 28716

Data Path : C:\My Files\cshrum\Desktop\Consolidated\Data\URINE\092617 Urine CANN\
 Data File : THC-C3.D
 Acq On : 26 Sep 2017 16:05
 Operator : District 5 Forensic Services
 Sample : Biorad C3 Control
 Misc : C3 Lot # 68440; Worklist 1906
 ALS Vial : 3 Sample Multiplier: 1

Integration Parameters: events.e
 Integrator: ChemStation

Method : C:\gcms\1\methods\TOX.M
 Title :

Signal : EIC Ion 371.00 (370.70 to 371.70): THC-C3.D\data.ms

peak #	R.T. min	first scan	max scan	last scan	PK TY	peak height	corr. area	corr. % max.	% of total
1	5.241	45	54	80	PV	273	5079	9.53%	4.529%
2	5.636	178	192	202	PV	938	14823	27.82%	13.219%
3	5.689	202	210	223	VV	313	5081	9.53%	4.531%
4	6.505	458	494	514	PV	2619	53287	100.00%	47.523%
5	6.583	514	521	526	PV 3	57	661	1.24%	0.589%
6	6.602	526	527	531	VV 2	29	171	0.32%	0.153%
7	6.741	548	575	595	BV	181	5579	10.47%	4.976%
8	6.864	595	618	630	VV 2	292	8051	15.11%	7.180%
9	6.939	630	644	663	VV	328	9028	16.94%	8.052%
10	7.137	692	713	728	PV	267	7230	13.57%	6.448%
11	7.201	728	735	743	PV 2	87	1380	2.59%	1.231%
12	7.274	750	761	772	VV 3	107	1758	3.30%	1.568%

Sum of corrected areas: 112128
 Signal : EIC Ion 473.00 (472.70 to 473.70): THC-C3.D\data.ms

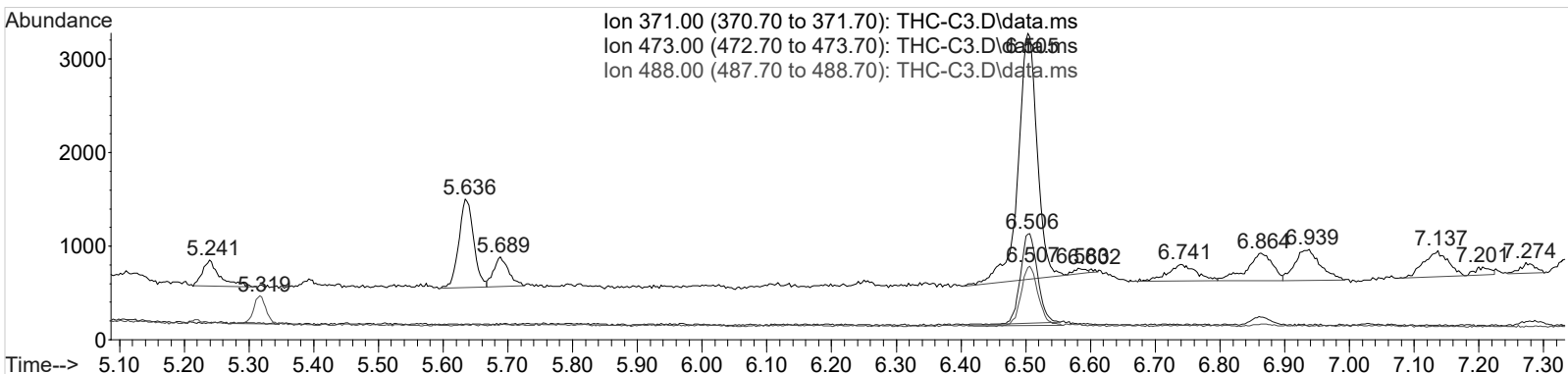
peak #	R.T. min	first scan	max scan	last scan	PK TY	peak height	corr. area	corr. % max.	% of total
1	6.506	470	494	511	BV	953	17229	100.00%	100.000%

Sum of corrected areas: 17229
 Signal : EIC Ion 488.00 (487.70 to 488.70): THC-C3.D\data.ms

peak #	R.T. min	first scan	max scan	last scan	PK TY	peak height	corr. area	corr. % max.	% of total
1	5.319	62	82	91	BV	297	3895	34.25%	25.513%
2	6.507	461	494	512	BV	627	11372	100.00%	74.487%

Sum of corrected areas: 15268

TOX.M Thu Sep 28 09:20:03 2017



CS

2.4.4 Carboxy-THC QC Calculations

Run Date: 9/26/2017

Case Calculations:
Lab Case #: BRC3 Lot 68440

<i>EIC Ion 371 Corr. Area:</i>	53287	
<i>EIC Ion 473 Corr. Area:</i>	17229	473:371 Ratio: 0.323
<i>EIC Ion 488 Corr. Area:</i>	11372	488:371 Ratio: 0.213

Quality Control Calculations:

Retention Time acceptable range: 6.43 to 6.606

	<i>1st ctrl</i>	<i>2nd ctrl</i>
<i>EIC Ion 371 Corr. Area:</i>	120644	136469
<i>EIC Ion 473 Corr. Area:</i>	36831	41806
<i>EIC Ion 488 Corr. Area:</i>	23492	26157

Approximate minimum corrected area of 371 ion: ~ 24129

<i>Ratio of 473:371</i>				
<i>1st ctrl</i>	<u>0.305</u>	<i>2nd ctrl</i>	<u>0.306</u>	<i>avg.</i>
0.306				
<i>Accepted Range (+/- 20%)</i>				
	0.245	-	0.367	

<i>Ratio of 488:371</i>				
<i>1st ctrl</i>	<u>0.195</u>	<i>2nd ctrl</i>	<u>0.192</u>	<i>avg.</i>
0.193				
<i>Accepted Range (+/- 20%)</i>				
	0.155	-	0.232	

Carboxy-calculation sheet
Revision 0 effective date 10/23/13
Issuing authority: Quality Manager